

Application



Crane Scale

适用于吊钩秤

Accessories: Hook, Ring

配件: 吊钩、吊环

Parameter

Material 材料: Alloy 合金钢

Capacity 量程: 3t-10t

Rated Output 额定输出: 2mV/V

Non Linearity 非线性: $\pm 0.02\%F.S.$

Hysteresis 滞后: $\pm 0.02\%F.S.$

Repeatability 重复性: $\pm 0.01\%F.S.$

Creep (30min) 蠕变: $\pm 0.02\%F.S.$

Zero Balance 零点输出: $\pm 1.00\%F.S.$

Tem.Effect on Zero 零点温度系数: $\pm 0.02\%F.S./10^{\circ}C$

Tem.Effect on Output 额定输出温度系数: $\pm 0.02\%F.S./10^{\circ}C$

Input Impedance 输入电阻: $385 \pm 10\Omega$

Out Impedance 输出电阻: $350 \pm 3\Omega$

Insulation Impedance 绝缘电阻: $\geq 5000M\Omega$

Excitation Voltage 供桥电压: 10V (DC/AC)

Compensated Tem.Range 补偿温度范围: $-10^{\circ}C \sim +50^{\circ}C$

Service Tem.Range 使用温度范围: $-20^{\circ}C \sim +60^{\circ}C$

Safe Overload Range 安全过载: $120\%F.S.$

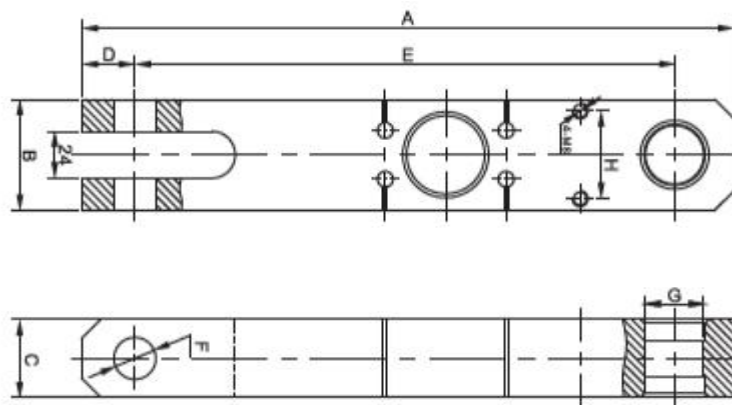
Protection Class 防护等级: IP67

Cable length 电缆长度: 0.5m

Wire Code 接线方式: Red 红 (Ex+) Black 黑 (Ex-)

Green 绿 (Sig+) White 白 (Sig-)

Outline Dimensions



Capacity	Size (mm)									N.W.
	t	A	B	C	D	E	F	G	H	
3	335.0	57.0	40.0	27.5	277.0	21.5	30.0	45.0	24.0	4.0
5	362.0	68.0	45.0	28.0	298.5	26.0	35.0	50.0	36.0	6.0
10	384.0	83.0	55.0	34.5	307.5	32.4	40.0	60.0	32.0	8.0

