

## Application



Crane Scale

适用于吊钩秤

Accessories: Hook, Ring

配件: 吊钩、吊环

## Parameter

Material 材料: Alloy 合金钢

Capacity 量程: 1t-30t

Rated Output 额定输出: 1.2mV/V

Non Linearity 非线性:  $\pm 0.02\%F.S.$

Hysteresis 滞后:  $\pm 0.02\%F.S.$

Repeatability 重复性:  $\pm 0.01\%F.S.$

Creep (30min) 蠕变:  $\pm 0.02\%F.S.$

Zero Balance 零点输出:  $\pm 1.00\%F.S.$

Tem.Effect on Zero 零点温度系数:  $\pm 0.02\%F.S./10^{\circ}C$

Tem.Effect on Output 额定输出温度系数:  $\pm 0.02\%F.S./10^{\circ}C$

Input Impedance 输入电阻:  $385 \pm 15\Omega$

Out Impedance 输出电阻:  $350 \pm 5\Omega$

Insulation Impedance 绝缘电阻:  $\geq 5000M\Omega$

Excitation Voltage 供桥电压: 10V (DC/AC)

Compensated Tem.Range 补偿温度范围:  $-10^{\circ}C \sim +50^{\circ}C$

Service Tem.Range 使用温度范围:  $-20^{\circ}C \sim +60^{\circ}C$

Safe Overload Range 安全过载:  $120\%F.S.$

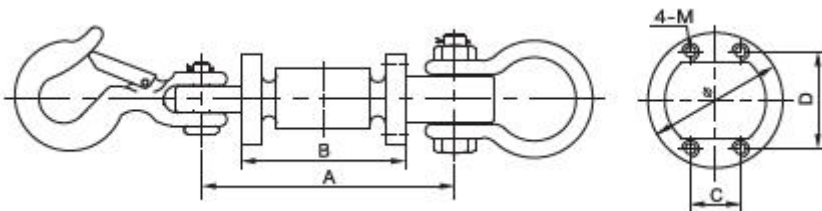
Protection Class 防护等级: IP67

Cable length 电缆长度: 0.5m

Wire Code 接线方式: Red 红 (Ex+) Black 黑 (Ex-)

Green 绿 (Sig+) White 白 (Sig-)

## Outline Dimensions



Capacity	Size (mm)						N.W.
	t	A	B	C	D	Φ	
1	130.0	74.0	16.0	37.0	48.0	M6	2.5
2	150.0	82.0	22.0	47.0	62.0	M6	4.5
3	150.0	82.0	22.0	47.0	62.0	M6	7.0
5	188.0	103.0	28.0	56.0	72.0	M6	10.0
10	230.0	120.0	28.0	66.0	82.0	M6	24.0

