



Application

Truck Scale, Dynamic Railway Scale, Hopper Scale

适用于汽车衡、动态轨道衡及料斗秤

Accessories: Load Head, Mounting Kits

配件: 压头、模块



Parameter

Material 材料: Stainless 不锈钢

Capacity 量程: 20t-60t

Rated Output 额定输出: 2mV/V

Non Linearity 非线性: $\pm 0.03\%F.S.$

Hysteresis 滞后: $\pm 0.02\%F.S.$

Repeatability 重复性: $\pm 0.01\%F.S.$

Creep (30min) 蠕变: $\pm 0.02\%F.S.$

Zero Balance 零点输出: $\pm 1.00\%F.S.$

Tem.Effect on Zero 零点温度系数: $\pm 0.02\%F.S./10^{\circ}C$

Tem.Effect on Output 额定输出温度系数: $\pm 0.02\%F.S./10^{\circ}C$

Input Impedance 输入电阻: $700 \pm 5\Omega$

Out Impedance 输出电阻: $700 \pm 5\Omega$

Insulation Impedance 绝缘电阻: $\geq 5000M\Omega$

Excitation Voltage 供桥电压: 10V (DC/AC)

Compensated Tem.Range 补偿温度范围: $-10^{\circ}C \sim +50^{\circ}C$

Service Tem.Range 使用温度范围: $-20^{\circ}C \sim +60^{\circ}C$

Safe Overload Range 安全过载: 120%F.S.

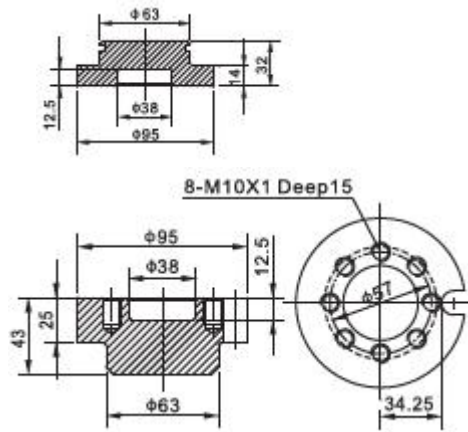
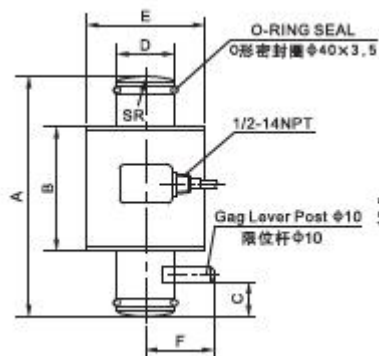
Protection Class 防护等级: IP68

Cable length 电缆长度: 9m

Wire Code 接线方式: Red 红 (Ex+) Black 黑 (Ex-)

Green 绿 (Sig+) White 白 (Sig-)

Outline Dimensions



Capacity	Size (mm)							N.W.
	A	B	C	D	E	F	SR	
Klb								kg
50se	152.4	80.0	26.0	37.0	76.5	63.5	150.0	2.5
50	192.0	90.0	26.0	37.0	76.5	63.5	150.0	3.5
100	225.0	120.0	26.0	37.0	76.5	63.5	150.0	4.5

