

# LHP-1



## Application

Truck Scale, Dynamic Railway Scale, Hopper Scale

适用于汽车衡、动态轨道衡及料斗秤

Accessories: Load Head, Mounting Kits

配件: 压头、模块



## Parameter

Material 材料: Alloy 合金钢, Stainless 不锈钢

Capacity 量程: 10Klb-1000Klb, 5t-500t

Rated Output 额定输出: 1.75mV/V, 2mV/V

Non Linearity 非线性:  $\pm 0.02\%F.S.$

Hysteresis 滞后:  $\pm 0.02\%F.S.$

Repeatability 重复性:  $\pm 0.01\%F.S.$

Creep (30min) 蠕变:  $\pm 0.02\%F.S.$

Zero Balance 零点输出:  $\pm 1.00\%F.S.$

Tem.Effect on Zero 零点温度系数:  $\pm 0.02\%F.S./10^{\circ}C$

Tem.Effect on Output 额定输出温度系数:  $\pm 0.02\%F.S./10^{\circ}C$

Input Impedance 输入电阻:  $450 \pm 5\Omega$

Out Impedance 输出电阻:  $450 \pm 5\Omega$

Insulation Impedance 绝缘电阻:  $\geq 5000M\Omega$

Excitation Voltage 供桥电压: 10V (DC/AC)

Compensated Tem.Range 补偿温度范围:  $-10^{\circ}C \sim +50^{\circ}C$

Service Tem.Range 使用温度范围:  $-20^{\circ}C \sim +60^{\circ}C$

Safe Overload Range 安全过载:  $120\%F.S.$

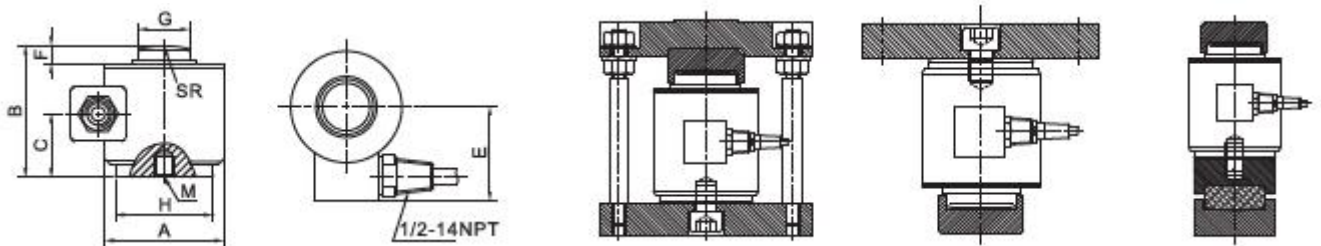
Protection Class 防护等级: IP68

Cable length 电缆长度: 9m

Wire Code 接线方式: Red 红 (Ex+) Black 黑 (Ex-)

Green 绿 (Sig+) White 白 (Sig-)

## Outline Dimensions



Capacity		Size mm								M			N.W.
t	Klb	A	B	C	E	F	G	H	SR	Inch	mm	DP	kg
5-20	10-50	75.0	83.0	32.5	64.0	10.0	31.8	62.0	125.0	1/2-20	M12*1.75	13.0	2.5
45	100	100.6	127.0	54.6	86.0	14.0	59.0	88.6	152.0	3/4-16	M18*1.5	18.0	5.5
90-180	200-400	150.6	184.5	92.0	108.0	26.0	80.0	134.4	400.0	3/4-16	M20*1.5	25.0	14.0
225	500	164.0	229.0	92.0	108.0	26.0	93.7	148.0	400.0	3/4-16	M20*1.5	25.0	29.0
450	1000	177.0	304.8	117.0	115.0	26.0	139.7	165.1	1143.0	3/4-16	M20*1.5	32.0	35.0



Huzhou Liheng Electronic Technology Co., Ltd

[www.lihengkeji.com](http://www.lihengkeji.com)