

Application



Single Installation 可单只使用
 Electronic Belt Scale, Hopper Scale,
 and Special Designed Scales
 适用于电子皮带秤, 料斗称及各种特制衡器

Parameter

Material 材料: Alloy 合金钢, Stainless 不锈钢

Capacity 量程: 25lb-7500lb

Rated Output 额定输出: 2mV/V

Non Linearity 非线性: $\pm 0.02\%F.S.$

Hysteresis 滞后: $\pm 0.02\%F.S.$

Repeatability 重复性: $\pm 0.01\%F.S.$

Creep (30min) 蠕变: $\pm 0.02\%F.S.$

Zero Balance 零点输出: $\pm 1.00\%F.S.$

Tem.Effect on Zero 零点温度系数: $\pm 0.02\%F.S./10^{\circ}C$

Tem.Effect on Output 额定输出温度系数: $\pm 0.02\%F.S./10^{\circ}C$

Input Impedance 输入电阻: $385 \pm 10\Omega$

Out Impedance 输出电阻: $350 \pm 3\Omega$

Insulation Impedance 绝缘电阻: $\geq 5000M\Omega$

Excitation Voltage 供桥电压: 10V (DC/AC)

Compensated Tem.Range 补偿温度范围: $-10^{\circ}C \sim +50^{\circ}C$

Service Tem.Range 使用温度范围: $-20^{\circ}C \sim +60^{\circ}C$

Safe Overload Range 安全过载: $120\%F.S.$

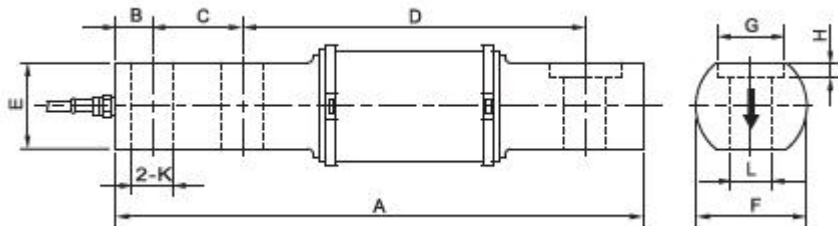
Protection Class 防护等级: IP67

Cable length 电缆长度: 6m

Wire Code 接线方式: Red 红 (Ex+) Black 黑 (Ex-)

Green 绿 (Sig+) White 白 (Sig-)

Outline Dimensions



Capacity	Size (mm)										N.W.	
	A	B	C	D	E	F	G	H	L	K		
lb												kg
25-100	152.4	9.6	22.4	108.0	27.0	32.0	-	-	7.9	7.9		0.8
200-1000	168.4	12.7	28.5	108.0	27.0	32.0	-	-	13.0	13.0		1.1
1000se-2500	289.0	12.7	44.5	209.6	31.8	50.8	30.4	3.1	16.0	13.5		3.5
5000-7500	323.9	19.0	50.8	215.9	70.0	89.0	35.0	4.6	19.7	20.0		5.0

